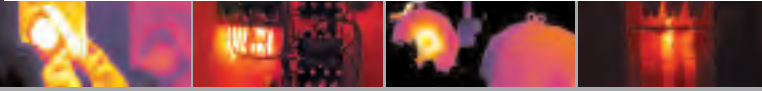


InfraCAM SD™

THERMAL IMAGER



The new and improved SD model of the InfraCAM gives you more image storage, more image quality and more post-processing capabilities! Detect hot spots, avoid electrical failures, increase safety and even prevent fires.



- > Stores 1,000 Radiometric JPEG Images
- > Built-in Laser LocatIR™ Removeable SD Memory Card
- > Razor-Sharp, Thermal Image Quality
- > Includes New, Powerful QuickReport Software
- > Long, 7 Hour Battery Life
- > Easy-to-operate, Large 3.5 Full Color LCD
- > Ultra-Portable, Weighs Just 1.2 lbs.
- > Find Problems Faster & Easier

Find Problems Fast

Monitor and diagnose the condition of electrical system components to detect and address problem areas before the delivery of power is interrupted. Crisp thermal images are clearly displayed on the large 3.5" color LCD – highlighting any anomalies that require attention.

Rugged, Ergonomic & Lightweight

Hold in your hand, clip to your belt or place in your toolbox, the InfraCAM SD weighs just 1.21 lbs. It is the lightest IR and thermal imaging storage camera in the world. Dust and splash proof, the InfraCAM SD meets IP 54 standards and withstands harsh industrial environments.

Improved Image Storage

InfraCAM SD stores 1,000 images in standard radiometric JPEG format. Insert your images directly into email, MicroSoft® Word or Powerpoint®. Recall, analyze and share your findings with others in the field using the camera's LCD. With the new SD card, you are no longer tethered to your computer!

Pinpoint Problems with Precision

The built-in Laser LocatIR™ quickly helps you associate the hot spot on the IR image with the real physical target. This feature greatly enhances the ability to target inconsistencies.

Improved Image Quality! View Sensitive Thermal Images

Now with improved sensitivity, you can see smaller temperature differences and get sharper images! A maintenance-free, state-of-the-art uncooled FPA infrared detector produces highly sensitive thermal images that allow you to detect subtle temperature variations that can signal faults in electrical components.

Smart Power Management

Lightweight, long life Li-Ion battery assures uninterrupted inspections for up to 7 hours on a single charge. InfraCAM SD includes an internal battery charger and one battery. Optional car/truck charger and additional batteries are available.

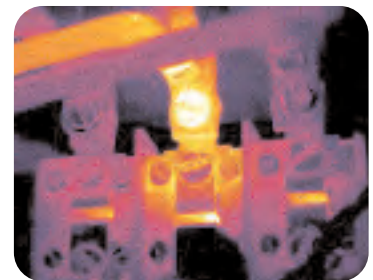
Fast Detection for Fast Action

Quickly and easily scan entire electrical systems – inspect areas that can't be easily reached with thermocouples or other contact-based tools. Instantly detect and document faulty connections, fuses, circuit breakers, wiring and other electrical components for immediate repair – enhancing productivity and safety and averting unscheduled system shutdowns.

Now even easier to use with the "Area min-max function" that instantly finds the hottest or coldest temperature of a target and eliminates the risk of missing key information

Download and Report! QuickReport Software

Download thermal images to your PC quickly with QuickReport™ software and standard USB cables. Powerful, easy-to-use software for downloading images, making analysis and reports. The InfraCAM SD is also compatible with the new, feature-rich ThermoCAM® Reporter 8 Software.



Infrared can accurately and quickly locate faults before failures, shutdowns, or even fires occur.

INFRACAM SD™ Technical Specifications

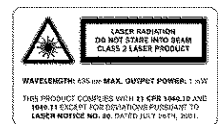
Imaging Performance	
Field of view/min focus distance	Fixed 25° x 25°/0.3m
Measurement modes	Spot, area min. and max.
Detector type	Focal plane array (FPA) uncooled microbolometer; 120 x 120 pixels
Spectral range	7.5 to 13 µm
Temperature range	-10° C to +350° C (+14° F to +662° F)
Image Presentation	
Display	3.5" color LCD, 240 x 240 pixels
Video output	MPEG-4 over USB
Image controls	Palettes (color, B/W), level, span, auto adjust (continuous/manual)
Set-up controls	Date/time, language (English, Spanish), info, LCD intensity (high/normal/low), power down
Image Storage	
Digital storage functions	Store, Delete all images, Delete image, Open
Image storage	1000 JPEG Images, removable SD Card (128MB - included)
Laser LocatIR	
Classification	Class 2
Type	Semiconductor AlGaInP Diode Laser: 1mW/635 nm (red)
Power Source	
Battery type	Li-Ion-Rechargeable Li/Ion battery
Battery operating time	7 hours. Display shows battery status
Charging system	In camera, AC adapter or 12V from car with optional 12V cable.
AC operation	AC adapter 90-260 VAC, 50/60 Hz / 12VDC out
Voltage	11-16 VDC
Power saving	Automatic shutdown (user-selectable)
Environmental	
Operating temperature range	-15° C to +50° C (+5° F to 122° F)
Storage temperature range	-40° C to +70° C (-40° F to 158° F)
Humidity	Operating and storage 20% to 80%, non-condensing, IEC 359
Water and dust resistant (encapsulation)	IP 54
Shock	25G, IEC 68-2-29
Vibration	2G, IEC 68-2-6
Physical Characteristics	
Weight	<1.21 lbs. (0.55kg), including battery
Size (L x W x H)	243mm x 81mm x 103mm (9.6" x 3.2" x 4.1")
Color	Red
Tripod Mounting	Standard, 1/4" - 20
Interfaces	
USB	Image transfer to PC

InfraCAM SD System Includes:

IR camera with lens and built-in Laser LocatIR™
Ruggedized transport case
Power supply
Hand strap
Lens cap
QuickReport software
USB cable
128MB SD Card
User manual
Power cord
1 Battery



NEW! SD card that stores up to 1,000 infrared images. Move and print standard radiometric JPEG images to a computer and your printer without cables.



1 800 464 6372
Canada: 1 800 613 0507

www.flirthermography.com/icamsddata

Specifications subject to change. © Copyright 2007, FLIR Systems, Inc. All rights reserved. I012207PL