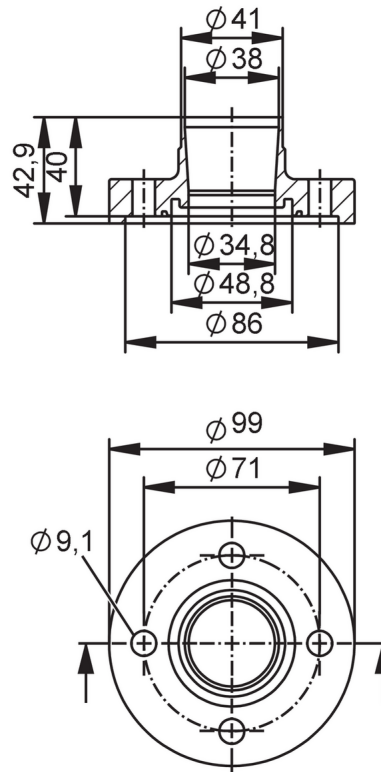




## Welding adapters EN10357 series A

ADAPT EN10357 DN40



EC 1935/2004 FCM FDA

Application	
Design	for flow meter SMF
Application	food and beverage industry; hygienic systems
Pressure rating	40 bar   4 MPa
MAWP (for applications according to CRN) [MPa]	4
Tests / approvals	
Pressure equipment directive	A possible classification to PED depends on the application and has to be carried out by the user / operator.
Safety instructions	The compatibility between medium and product material has to be checked in all applications.
Mechanical data	
Weight [g]	2387.6
Housing	tubular
Dimensions [mm]	Ø 99 / L = 42.9
Materials (wetted parts)	stainless steel (1.4404 / 316L)
Nominal diameter	DN40 (1 1/2")
Sensor connection	ifm-specific device flange
Process connection	Welding adapter EN10357 series A (DIN)
Process connection suitable for pipe standard	(DIN EN 10357 series A); (DIN 11866 series A); (DIN 11850 series 1); (DIN 11850 series 2)
Surface characteristics Ra/Rz of the wetted parts	Ra < 0.4 µm

# E40472



## Welding adapters EN10357 series A

ADAPT EN10357 DN40

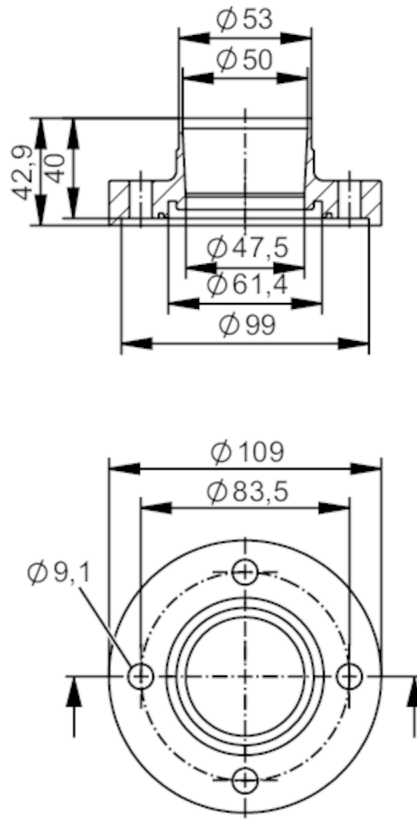
Accessories	
Items supplied	screws 8
Remarks	
Remarks	MAWP (for applications according to CRN) with VMQ sealing ring E40572, 3.4 MPa applies
Pack quantity	2 pcs.

# E40473



## Welding adapters EN10357 series A

ADAPT EN10357 DN50



Application	
Design	for flow meter SMF
Application	food and beverage industry; hygienic systems
Pressure rating	25 bar 2.5 MPa
Tests / approvals	
Pressure equipment directive	A possible classification to PED depends on the application and has to be carried out by the user / operator.
Safety instructions	The compatibility between medium and product material has to be checked in all applications.
Mechanical data	
Weight [g]	2567.9
Housing	tubular
Dimensions [mm]	$\varnothing 109 / L = 42.9$
Materials (wetted parts)	stainless steel (1.4404 / 316L)
Nominal diameter	DN50 (2")
Sensor connection	ifm-specific device flange
Process connection	Welding adapter EN10357 series A (DIN)
Process connection suitable for pipe standard	(DIN EN 10357 series A); (DIN 11866 series A); (DIN 11850 series 1); (DIN 11850 series 2)

# E40473



## Welding adapters EN10357 series A

ADAPT EN10357 DN50

Surface characteristics Ra/Rz  
of the wetted parts

Ra < 0.4 µm

### Accessories

Items supplied

screws 8

### Remarks

Pack quantity

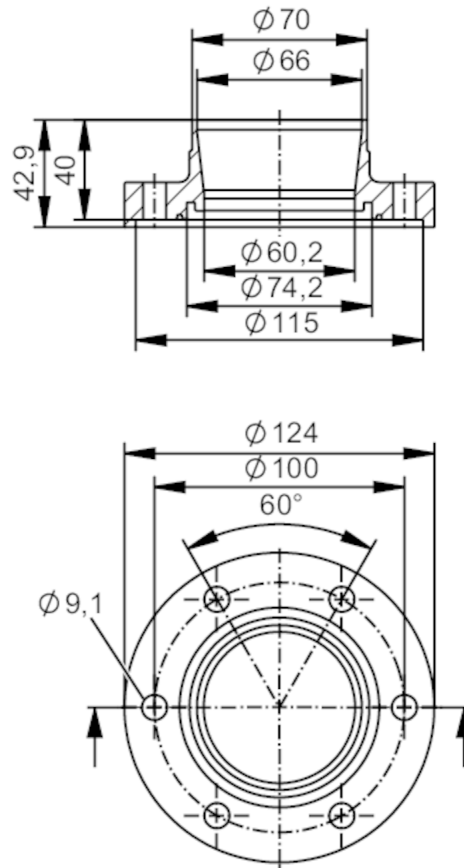
2 pcs.

# E40474



## Welding adapters EN10357 series A

ADAPT EN10357 DN65



EC 1935/2004 FCM FDA

### Application

Design	for flow meter SMF	
Application	food and beverage industry; hygienic systems	
Pressure rating	25 bar	2.5 MPa

### Tests / approvals

Pressure equipment directive	A possible classification to PED depends on the application and has to be carried out by the user / operator.	
Safety instructions	The compatibility between medium and product material has to be checked in all applications.	

### Mechanical data

Weight	[g]	3550
Housing		tubular
Dimensions	[mm]	Ø 124 / L = 42.9
Materials (wetted parts)		stainless steel (1.4404 / 316L)
Nominal diameter		DN65 (2 1/2")
Sensor connection		ifm-specific device flange
Process connection		Welding adapter EN10357 series A (DIN)
Process connection suitable for pipe standard		(DIN EN 10357 series A); (DIN 11866 series A); (DIN 11850 series 2)

# E40474



## Welding adapters EN10357 series A

ADAPT EN10357 DN65

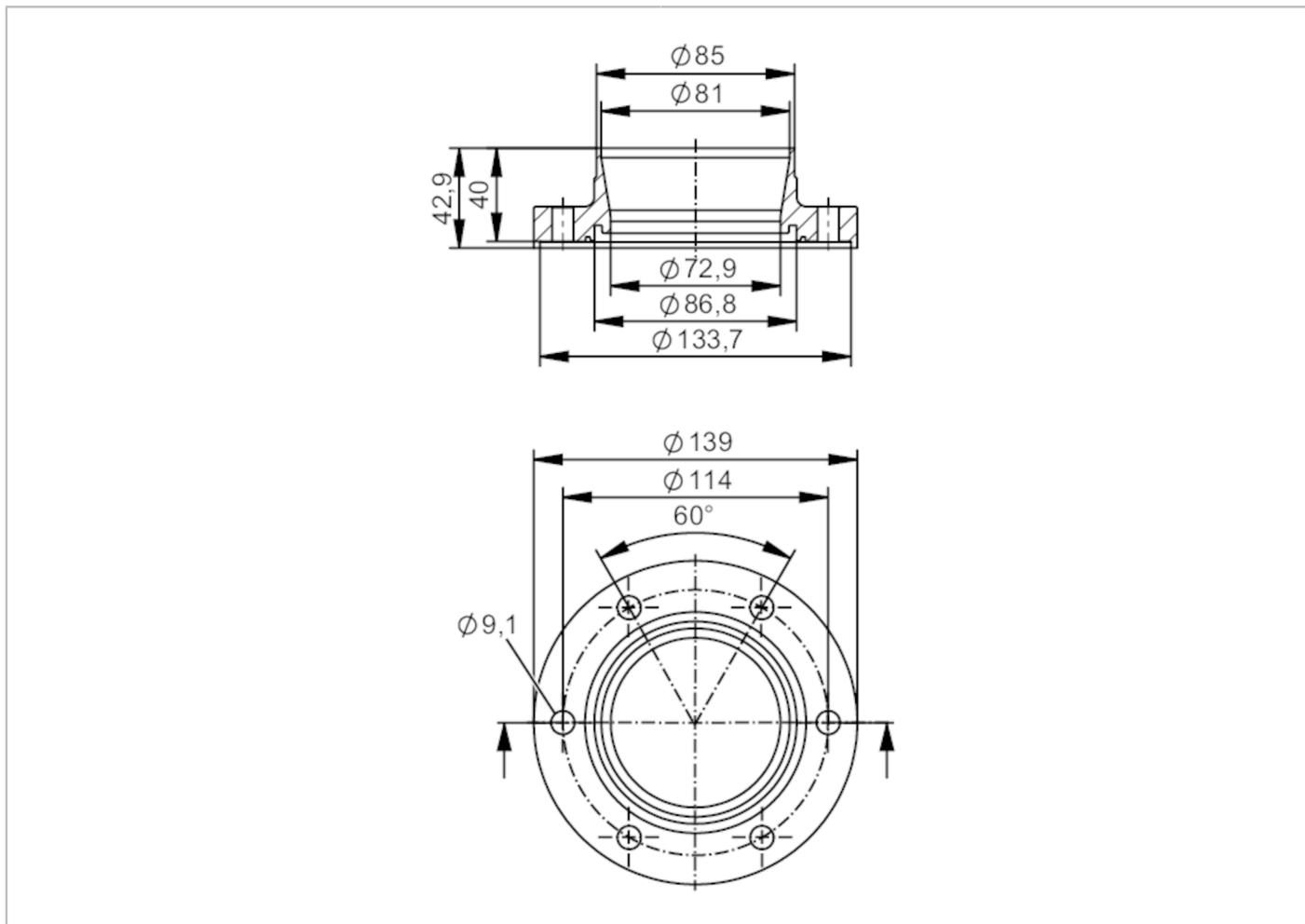
Surface characteristics Ra/Rz of the wetted parts	Ra < 0.4 µm
<b>Accessories</b>	
Items supplied	screws 12
<b>Remarks</b>	
Pack quantity	2 pcs.

# E40475



## Welding adapters EN10357 series A

ADAPT EN10357 DN80



Application	
Design	for flow meter SMF
Application	food and beverage industry; hygienic systems
Pressure rating	25 bar / 2.5 MPa
Tests / approvals	
Pressure equipment directive	A possible classification to PED depends on the application and has to be carried out by the user / operator.
Safety instructions	The compatibility between medium and product material has to be checked in all applications.
Mechanical data	
Weight [g]	3976.5
Housing	tubular
Dimensions [mm]	Ø 139 / L = 42.9
Materials (wetted parts)	stainless steel (1.4404 / 316L)
Nominal diameter	DN80 (3")
Sensor connection	ifm-specific device flange
Process connection	Welding adapter EN10357 series A (DIN)

# E40475



## Welding adapters EN10357 series A

ADAPT EN10357 DN80

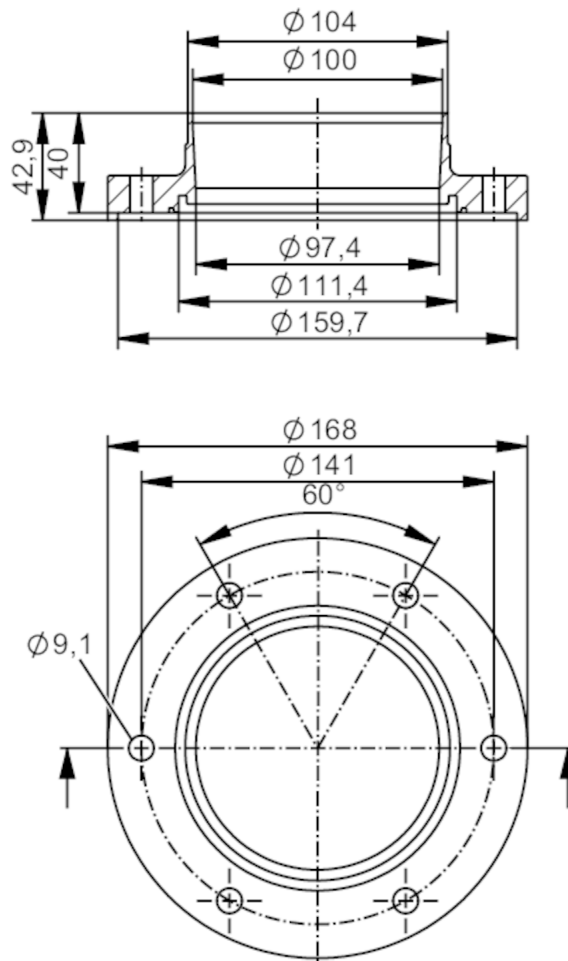
Process connection suitable for pipe standard	(DIN EN 10357 series A); (DIN 11866 series A); (DIN 11850 series 2)
Surface characteristics Ra/Rz of the wetted parts	Ra < 0.4 µm
<b>Accessories</b>	
Items supplied	screws 12
<b>Remarks</b>	
Pack quantity	2 pcs.

# E40476



## Welding adapters EN10357 series A

ADAPT EN10357 DN100



EC 1935/2004 FCM FDA

Application	
Design	for flow meter SMF
Application	food and beverage industry; hygienic systems
Pressure rating	25 bar 2.5 MPa
Tests / approvals	
Pressure equipment directive	A possible classification to PED depends on the application and has to be carried out by the user / operator.
Safety instructions	The compatibility between medium and product material has to be checked in all applications.
Mechanical data	
Weight [g]	4840.9
Housing	tubular
Dimensions [mm]	$\varnothing 168$ / L = 42.9
Materials (wetted parts)	stainless steel (1.4404 / 316L)
Nominal diameter	DN100 (4")
Sensor connection	ifm-specific device flange

# E40476



## Welding adapters EN10357 series A

ADAPT EN10357 DN100

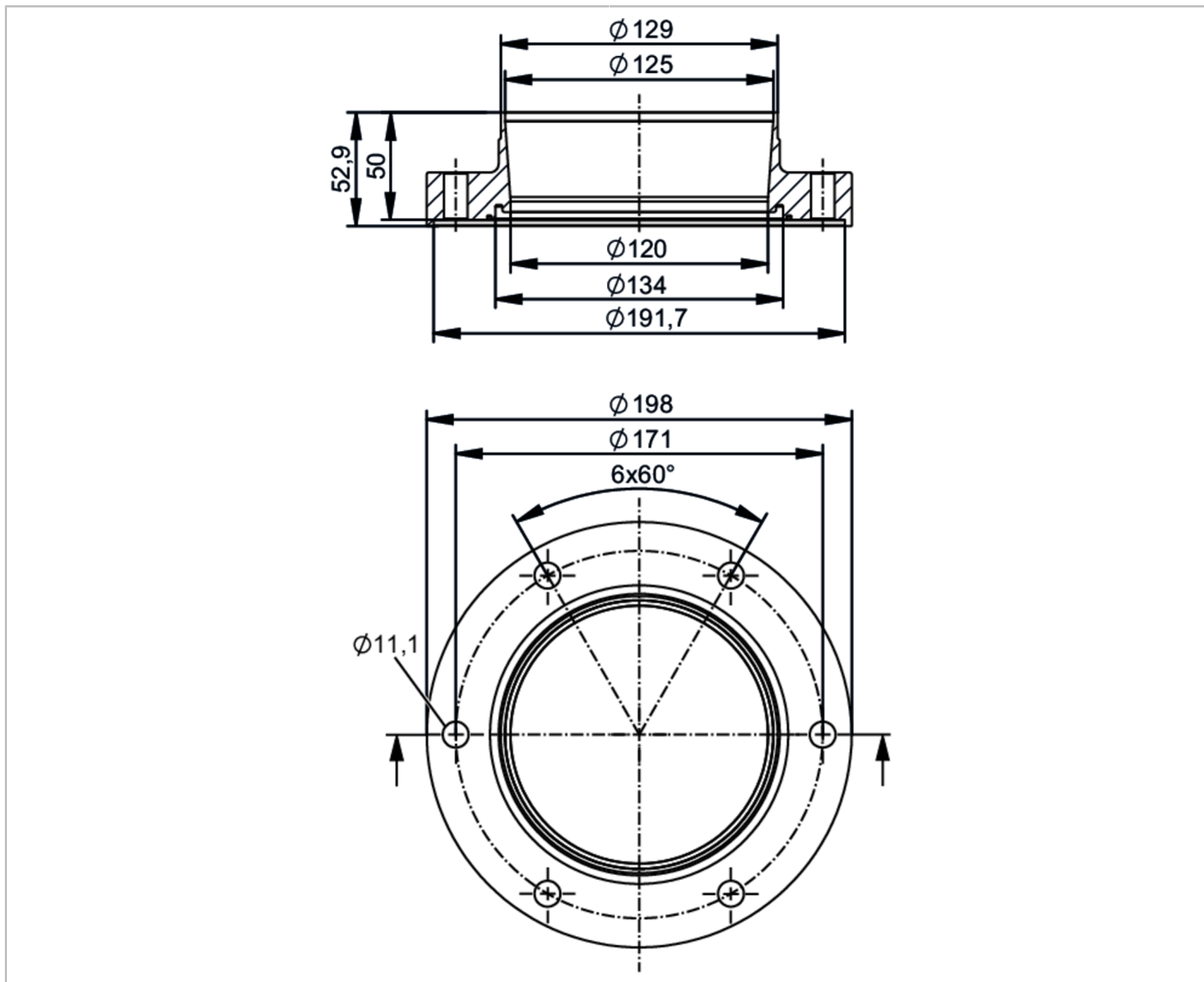
Process connection	Welding adapter EN10357 series A (DIN)
Process connection suitable for pipe standard	(DIN EN 10357 series A); (DIN 11866 series A); (DIN 11850 series 2)
Surface characteristics Ra/Rz of the wetted parts	Ra < 0.4 $\mu$ m
<b>Accessories</b>	
Items supplied	screws 12
<b>Remarks</b>	
Pack quantity	2 pcs.

# E40477



## Welding adapters EN10357 series A

ADAPT EN10357 DN125



Application	
Design	for flow meter SMF
Application	food and beverage industry; hygienic systems
Pressure rating	16 bar 1.6 MPa
Tests / approvals	
Pressure equipment directive	A possible classification to PED depends on the application and has to be carried out by the user / operator.
Safety instructions	The compatibility between medium and product material has to be checked in all applications.
Mechanical data	
Weight [g]	9.01
Housing	tubular
Dimensions [mm]	Ø 198 / L = 52.9
Materials (wetted parts)	stainless steel (1.4404 / 316L)

# E40477



## Welding adapters EN10357 series A

ADAPT EN10357 DN125

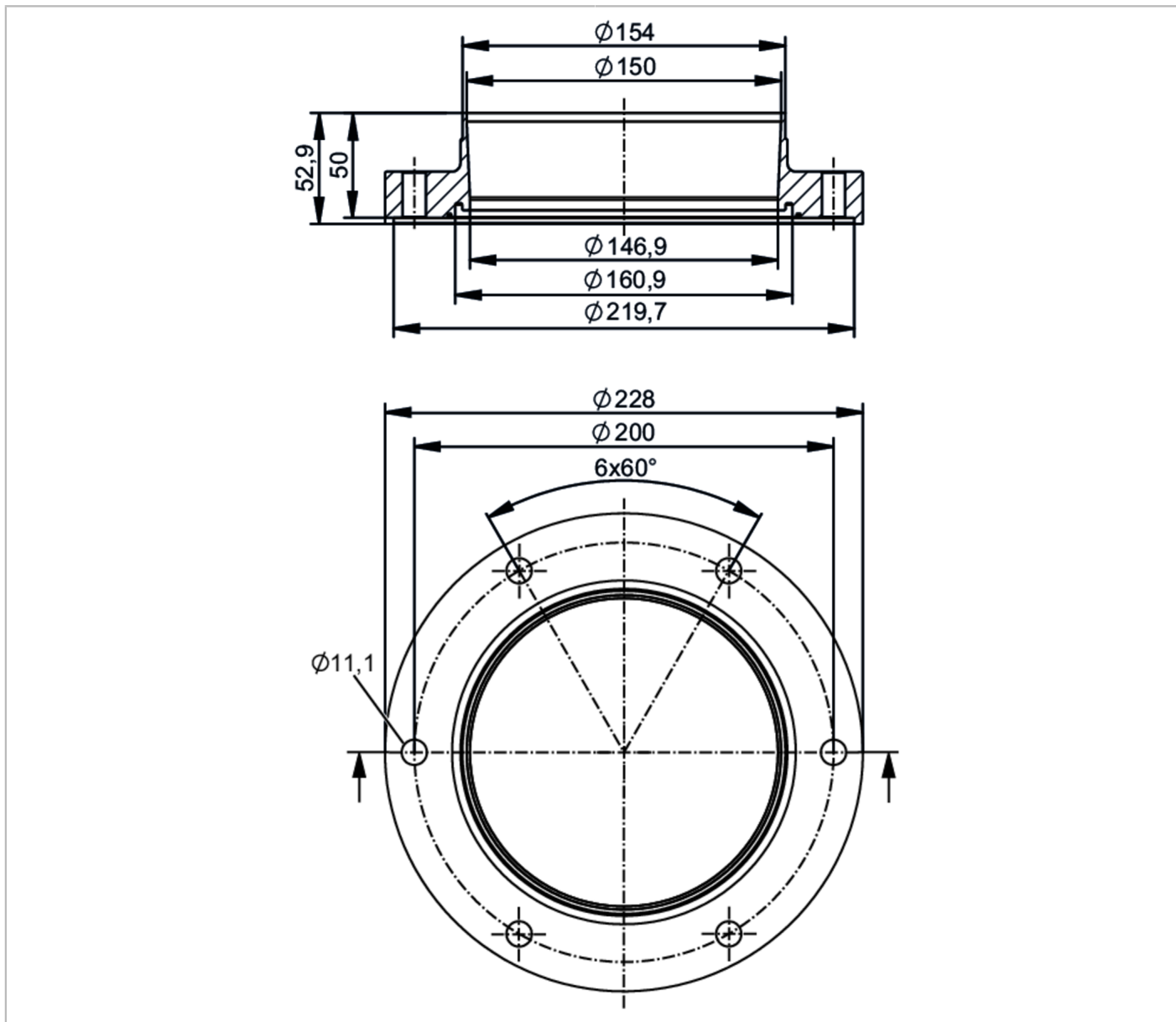
Nominal diameter	DN125 (5")
Sensor connection	ifm-specific device flange
Process connection	Welding adapter EN10357 series A (DIN)
Process connection suitable for pipe standard	(DIN EN 10357 series A); (DIN 11866 series A); (DIN 11850 series 2)
Surface characteristics Ra/Rz of the wetted parts	Ra < 0.4 µm
<b>Accessories</b>	
Items supplied	screws 12
<b>Remarks</b>	
Pack quantity	2 pcs.

# E40478



## Welding adapters EN10357 series A

ADAPT EN10357 DN150



Application	
Design	for flow meter SMF
Application	food and beverage industry; hygienic systems
Pressure rating	16 bar / 1.6 MPa
Tests / approvals	
Pressure equipment directive	A possible classification to PED depends on the application and has to be carried out by the user / operator.
Safety instructions	The compatibility between medium and product material has to be checked in all applications.
Mechanical data	
Weight [g]	11450
Housing	tubular
Dimensions [mm]	$\varnothing 228 / L = 52.9$

# E40478



## Welding adapters EN10357 series A

ADAPT EN10357 DN150

Materials (wetted parts)	stainless steel (1.4404 / 316L)
Nominal diameter	DN150 (6")
Sensor connection	ifm-specific device flange
Process connection	Welding adapter EN10357 series A (DIN)
Process connection suitable for pipe standard	(DIN EN 10357 series A); (DIN 11866 series A); (DIN 11850 series 2)
Surface characteristics Ra/Rz of the wetted parts	Ra < 0.4 µm
<b>Accessories</b>	
Items supplied	screws 12
<b>Remarks</b>	
Pack quantity	2 pcs.