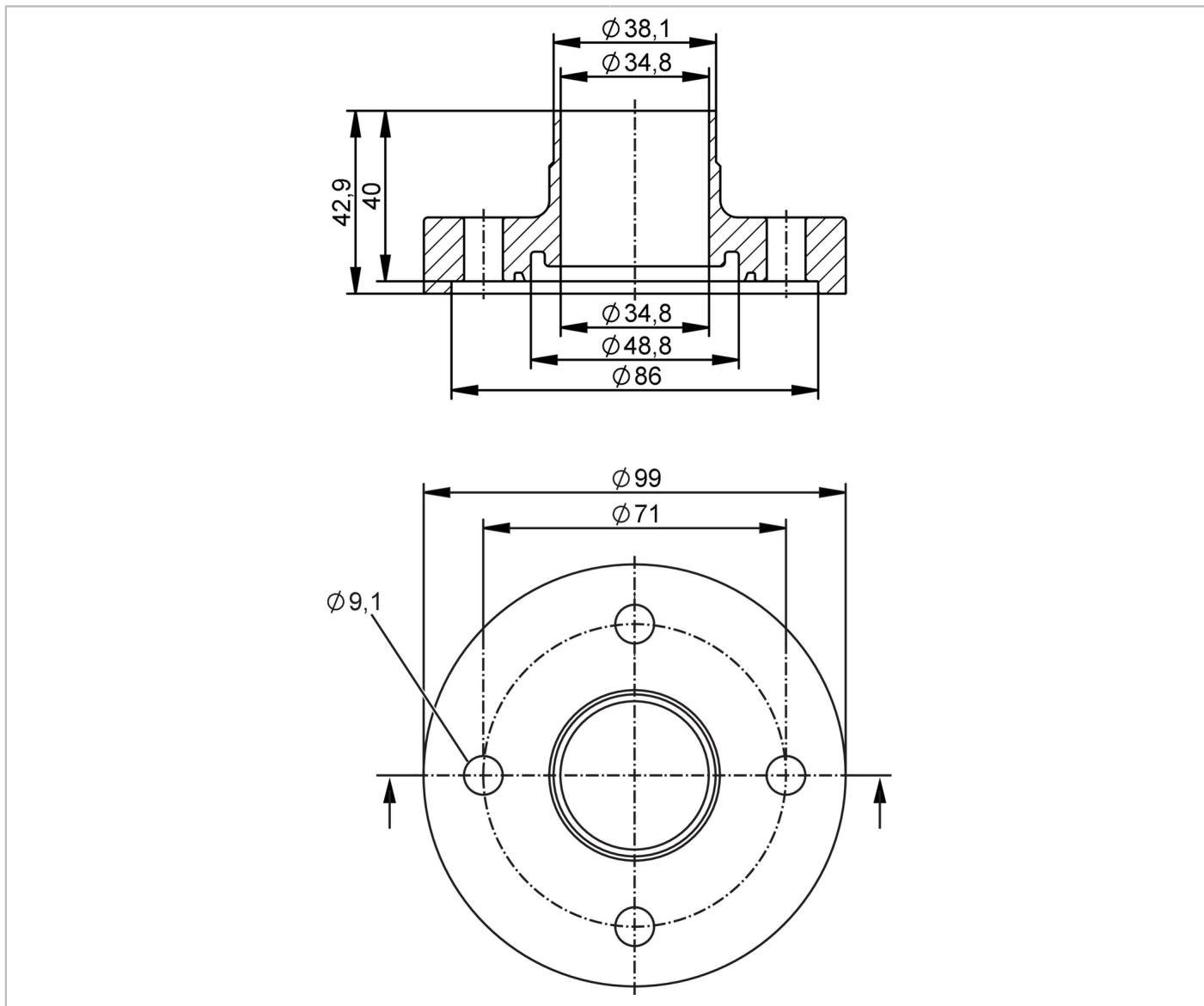


E40622



Welding adapters EN10357 series C (ASME BPE)

ADAPT EN10357-C DN40



EC 1935/2004 FCM FDA

Application	
Design	for flow meter SMF
Application	food and beverage industry; hygienic systems
Pressure rating	40 bar 4 MPa
MAWP (for applications according to CRN) [MPa]	4
Tests / approvals	
Pressure equipment directive	A possible classification to PED depends on the application and has to be carried out by the user / operator.
Safety instructions	The compatibility between medium and product material has to be checked in all applications.
Mechanical data	
Weight [g]	2382
Housing	tubular

E40622



Welding adapters EN10357 series C (ASME BPE)

ADAPT EN10357-C DN40

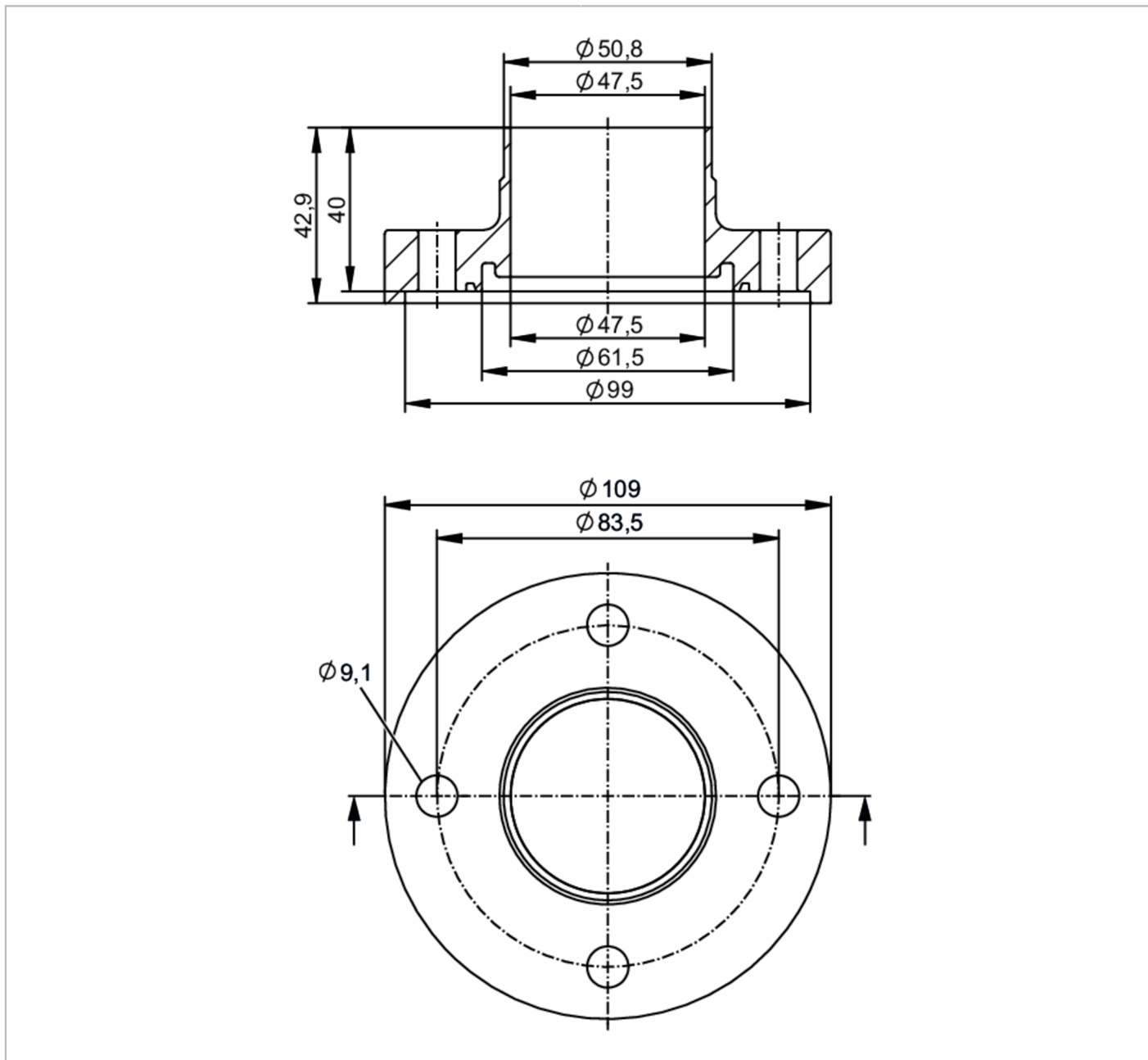
Dimensions	[mm]	Ø 99 / L = 42.9
Materials (wetted parts)		stainless steel (1.4404 / 316L)
Nominal diameter		DN40 (1 1/2")
Sensor connection		ifm-specific device flange
Process connection		Welding adapter EN10357 series C (ASME BPE)
Process connection suitable for pipe standard		(DIN EN 10357 series C); (DIN 11866 series C); (BS 4825 Part 1); (ISO 2037)
Surface characteristics Ra/Rz of the wetted parts		Ra < 0.4 µm
Accessories		
Items supplied		screws 8
Remarks		
Remarks		MAWP (for applications according to CRN) with VMQ sealing ring E40572, 3.4 MPa applies
Pack quantity		2 pcs.

E40623



Welding adapters EN10357 series C (ASME BPE)

ADAPT EN10357-C DN50



EC 1935/2004 FCM FDA

Application	
Design	for flow meter SMF
Application	food and beverage industry; hygienic systems
Pressure rating	25 bar 2.5 MPa
Tests / approvals	
Pressure equipment directive	A possible classification to PED depends on the application and has to be carried out by the user / operator.
Safety instructions	The compatibility between medium and product material has to be checked in all applications.
Mechanical data	
Weight	[g] 2580.4

E40623



Welding adapters EN10357 series C (ASME BPE)

ADAPT EN10357-C DN50

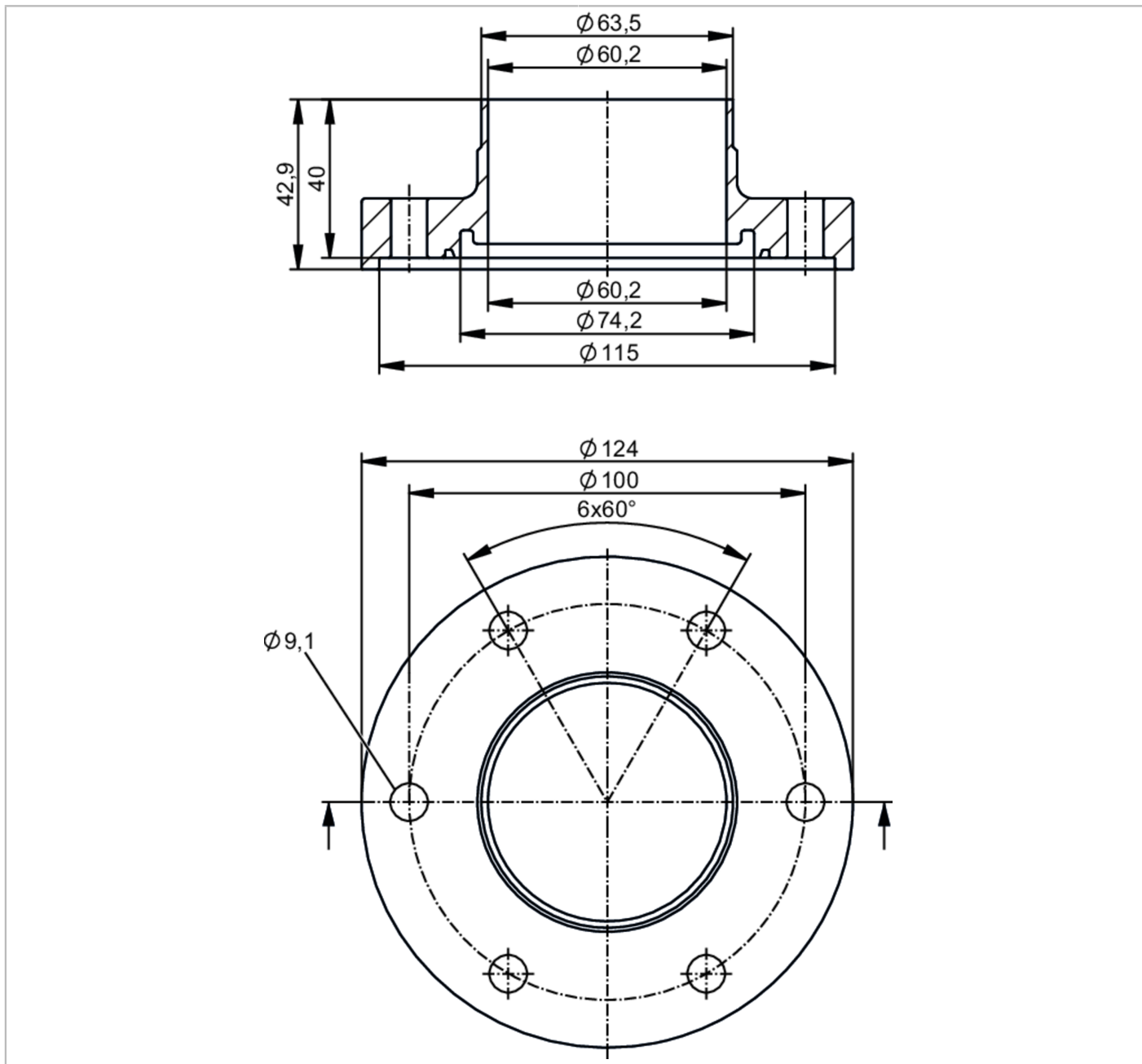
Housing	tubular
Dimensions [mm]	Ø 109 / L = 42.9
Materials (wetted parts)	stainless steel (1.4404 / 316L)
Nominal diameter	DN50 (2")
Sensor connection	ifm-specific device flange
Process connection	Welding adapter EN10357 series C (ASME BPE)
Process connection suitable for pipe standard	(DIN 11866 series C); (BS 4825 Part 1); (DIN EN 10357 series C)
Surface characteristics Ra/Rz of the wetted parts	Ra < 0.4 µm
Accessories	
Items supplied	screws 8
Remarks	
Pack quantity	2 pcs.

E40624



Welding adapters EN10357 series C (ASME BPE)

ADAPT EN10357-C DN65



Application	
Design	for flow meter SMF
Application	food and beverage industry; hygienic systems
Pressure rating	25 bar 2.5 MPa
Tests / approvals	
Pressure equipment directive	A possible classification to PED depends on the application and has to be carried out by the user / operator.
Safety instructions	The compatibility between medium and product material has to be checked in all applications.

E40624



Welding adapters EN10357 series C (ASME BPE)

ADAPT EN10357-C DN65

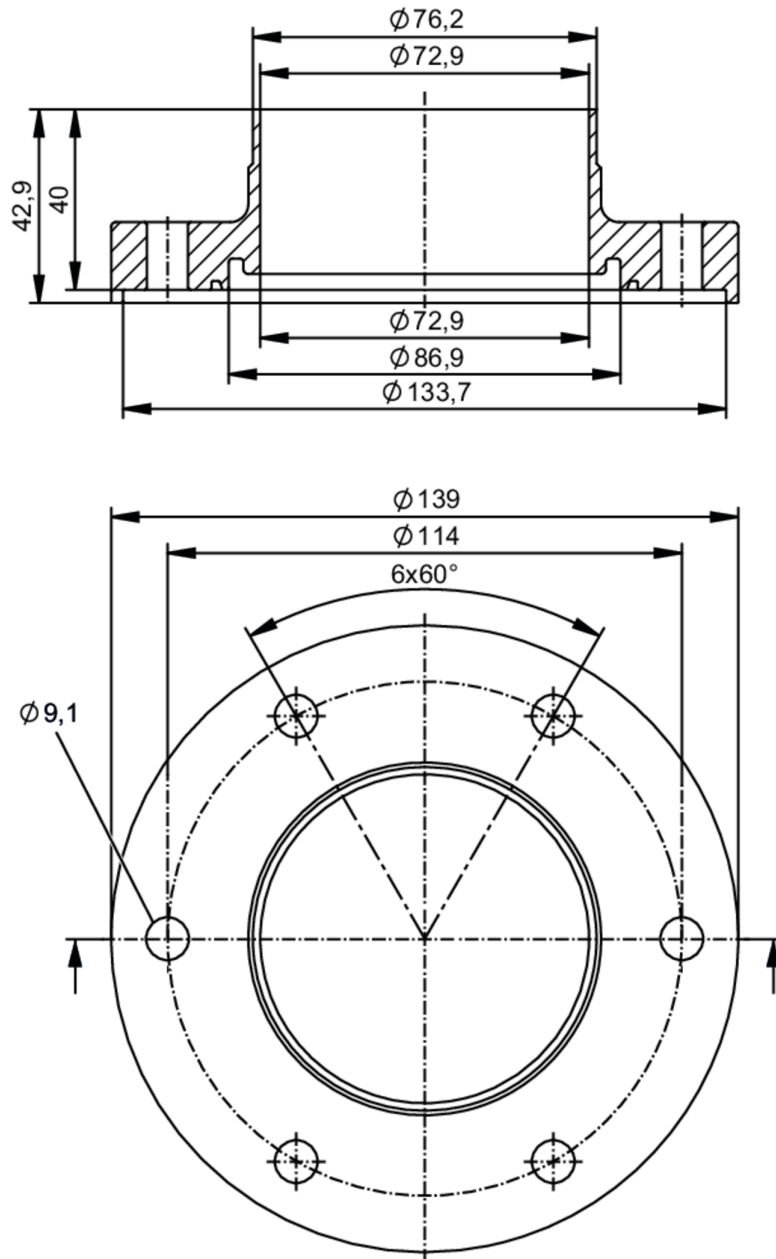
Mechanical data	
Weight [g]	3473.4
Housing	tubular
Dimensions [mm]	Ø 124 / L = 42.9
Materials (wetted parts)	stainless steel (1.4404 / 316L)
Nominal diameter	DN65 (2 1/2")
Sensor connection	ifm-specific device flange
Process connection	Welding adapter EN10357 series C (ASME BPE)
Process connection suitable for pipe standard	(DIN EN 10357 series C); (DIN EN 10357 series D); (DIN 11866 series C); (BS 4825 Part 1); (ISO 2037)
Surface characteristics Ra/Rz of the wetted parts	Ra < 0.4 µm
Accessories	
Items supplied	screws 12
Remarks	
Pack quantity	2 pcs.

E40625



Welding adapters EN10357 series C (ASME BPE)

ADAPT EN10357-C DN80



Application	
Design	for flow meter SMF
Application	food and beverage industry; hygienic systems
Pressure rating	25 bar 2.5 MPa
Tests / approvals	
Pressure equipment directive	A possible classification to PED depends on the application and has to be carried out by the user / operator.
Safety instructions	The compatibility between medium and product material has to be checked in all applications.

E40625



Welding adapters EN10357 series C (ASME BPE)

ADAPT EN10357-C DN80

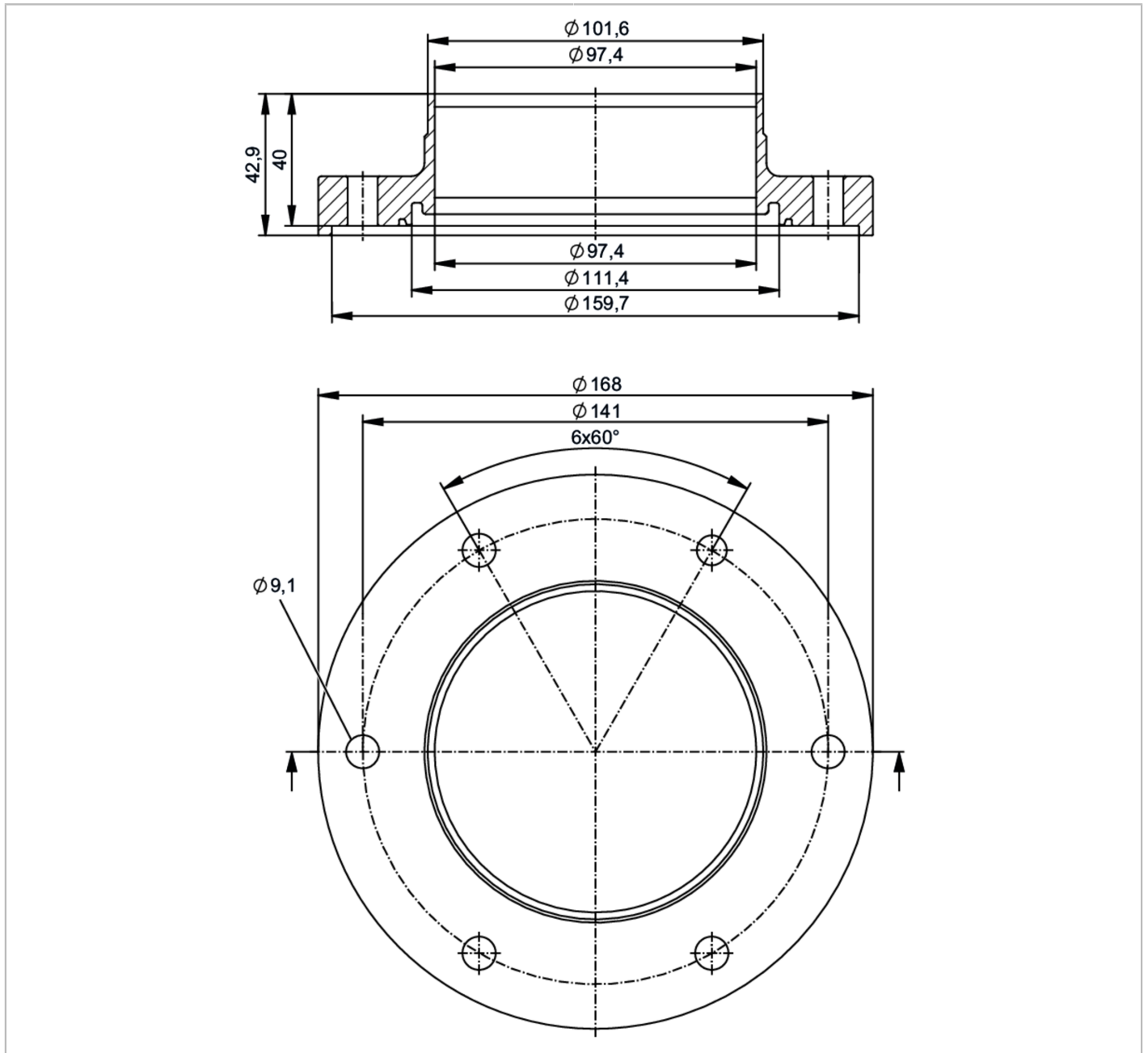
Mechanical data	
Weight [g]	3845.3
Housing	tubular
Dimensions [mm]	Ø 139 / L = 42.9
Materials (wetted parts)	stainless steel (1.4404 / 316L)
Nominal diameter	DN80 (3")
Sensor connection	ifm-specific device flange
Process connection	Welding adapter EN10357 series C (ASME BPE)
Process connection suitable for pipe standard	(DIN EN 10357 series C); (DIN EN 10357 series D); (DIN 11866 series C); (BS 4825 Part 1); (ISO 2037)
Surface characteristics Ra/Rz of the wetted parts	Ra < 0.4 µm
Accessories	
Items supplied	screws 12
Remarks	
Pack quantity	2 pcs.

E40626



Welding adapters EN10357 series C (ASME BPE)

ADAPT EN10357-C DN100



Application	
Design	for flow meter SMF
Application	food and beverage industry; hygienic systems
Pressure rating	25 bar 2.5 MPa
Tests / approvals	
Pressure equipment directive	A possible classification to PED depends on the application and has to be carried out by the user / operator.
Safety instructions	The compatibility between medium and product material has to be checked in all applications.

E40626



Welding adapters EN10357 series C (ASME BPE)

ADAPT EN10357-C DN100

Mechanical data	
Weight [g]	4815.5
Housing	tubular
Dimensions [mm]	Ø 168 / L = 42.9
Materials (wetted parts)	stainless steel (1.4404 / 316L)
Nominal diameter	DN100 (4")
Sensor connection	ifm-specific device flange
Process connection	Welding adapter EN10357 series C (ASME BPE)
Process connection suitable for pipe standard	(DIN EN 10357 series C); (DIN EN 10357 series D); (DIN 11866 series C); (BS 4825 Part 1); (ISO 2037)
Surface characteristics Ra/Rz of the wetted parts	Ra < 0.4 µm
Accessories	
Items supplied	screws 12
Remarks	
Pack quantity	2 pcs.